

What is the status of charcoal production in Village 5 and 6?

Hanneke van 't Veen, Vincent Gerald Vyamana and Moshy Salehe Mpembela

Charcoal production in Village 5 and 6 compared to a village with a project

Charcoal production pattern in Village 5 and 6

- Medium (± 2 ha) and small charcoal production sites.
- More selective cutting observed than clear cutting.
- Large variations in cutting styles across the village.
- Larger area subjected to charcoal production (1661.0 ha – 12.5% of village area) than in project villages.

0 2.5 5 km



2011 – Forest cover



2015 – Mix of clear and selective logging for charcoal production

Charcoal production pattern in village with a project

- Small charcoal production sites (mainly <1 ha) are scattered throughout the village.
- Relatively small area subjected to charcoal production (182.6 ha - 6.8% of village area).
- Mostly selective cutting for charcoal production.

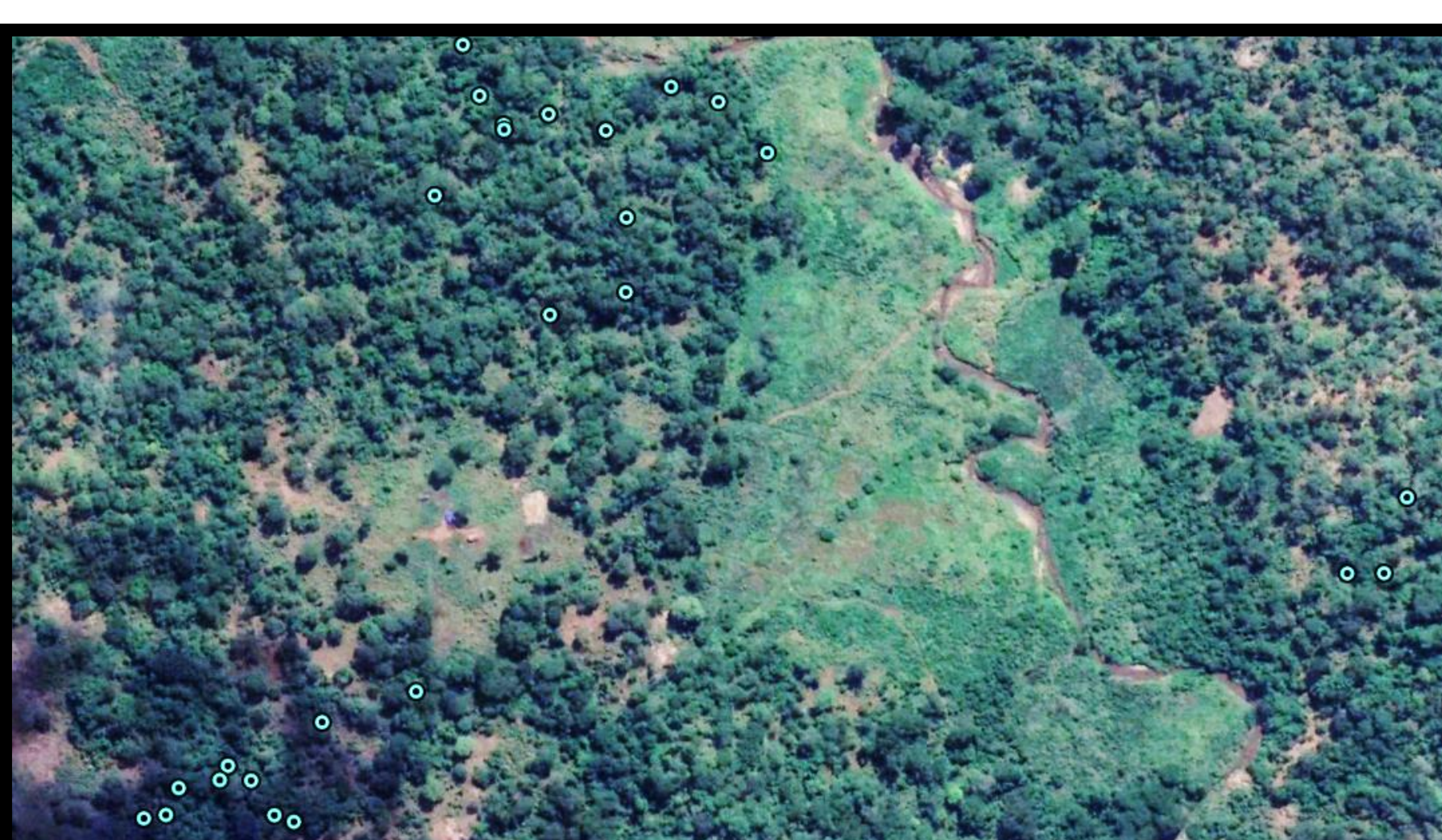


- Village area
- Village Land Forest Reserve (VLFR)
- Harvesting area
- Village
- Road
- Charcoal production sites detected using satellites

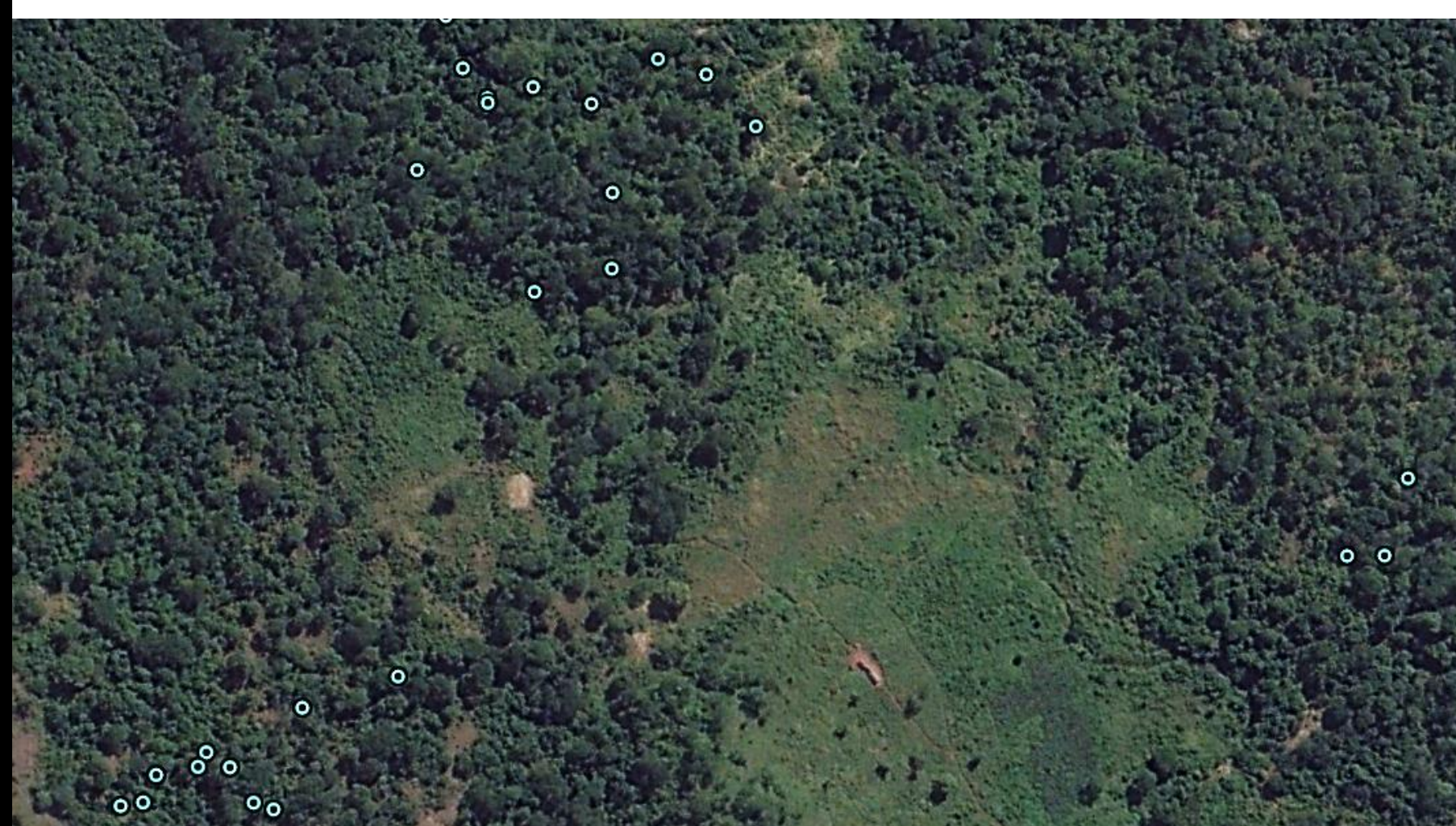
2019 – Selective cutting, kilns hidden underneath tree cover



Charcoal production in Village 5 and 6



2011 – Mix of forest and non-forest cover



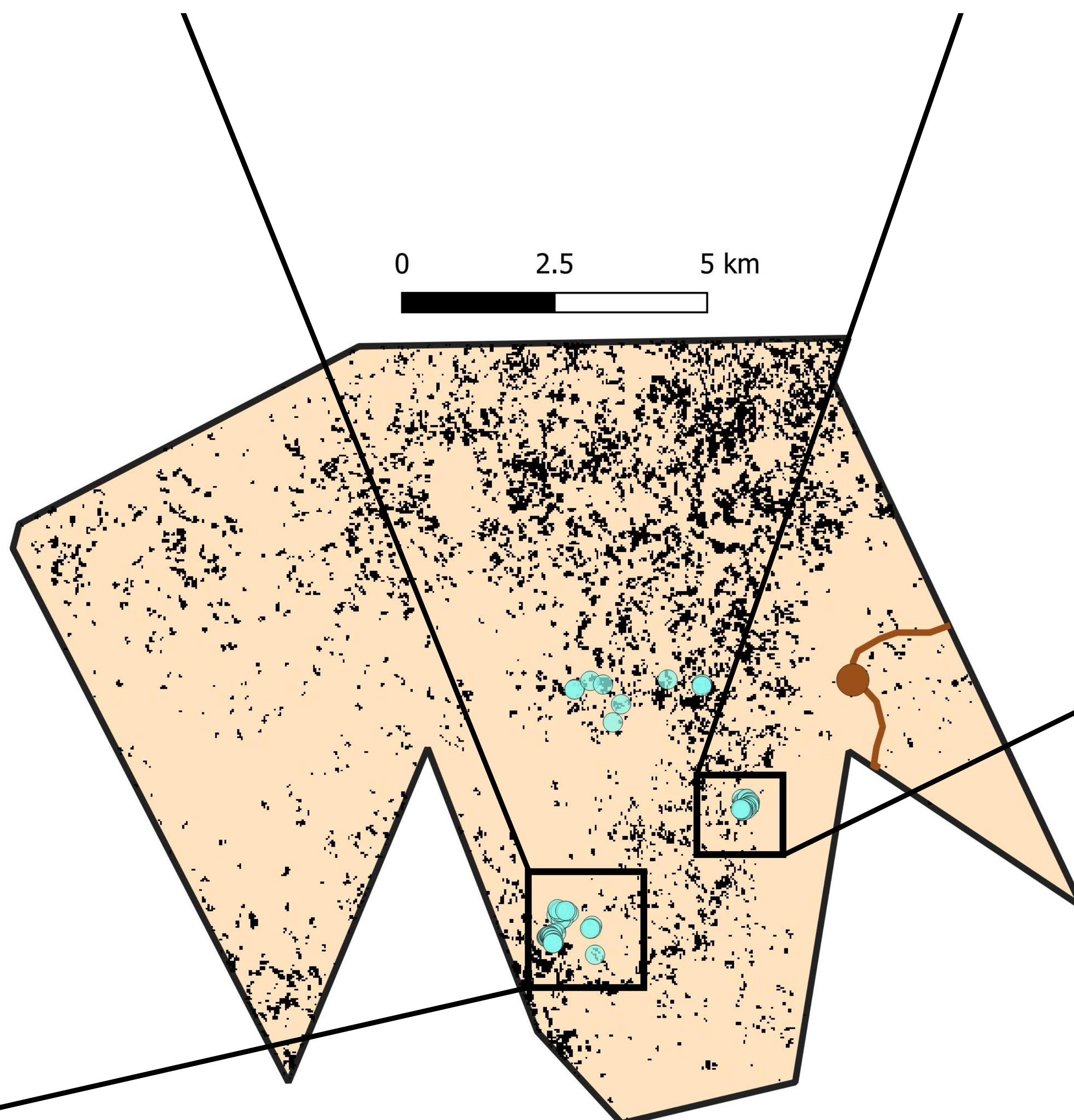
2015 – Some forest cut, some forest restored



2020 – Signs of charcoal production to establish new farms but also selective cutting

- Mix of clear and selective cutting for charcoal production – mix of deforestation and restoration over time.
- Indications that charcoal production may partially take place to establish new farms.
- Biomass loss occurred in 791 ha (47.6%) and biomass gain in 704 ha (42.4%) of the total charcoal production area between 2010 and 2020.

0 2.5 5 km



2015 – Forest cover



2020 – Mix of selective and clear cutting for charcoal production

- Village
- Road
- Charcoal kiln (scar) observed in the field in 2019 using GPS
- Charcoal production sites detected using satellites