

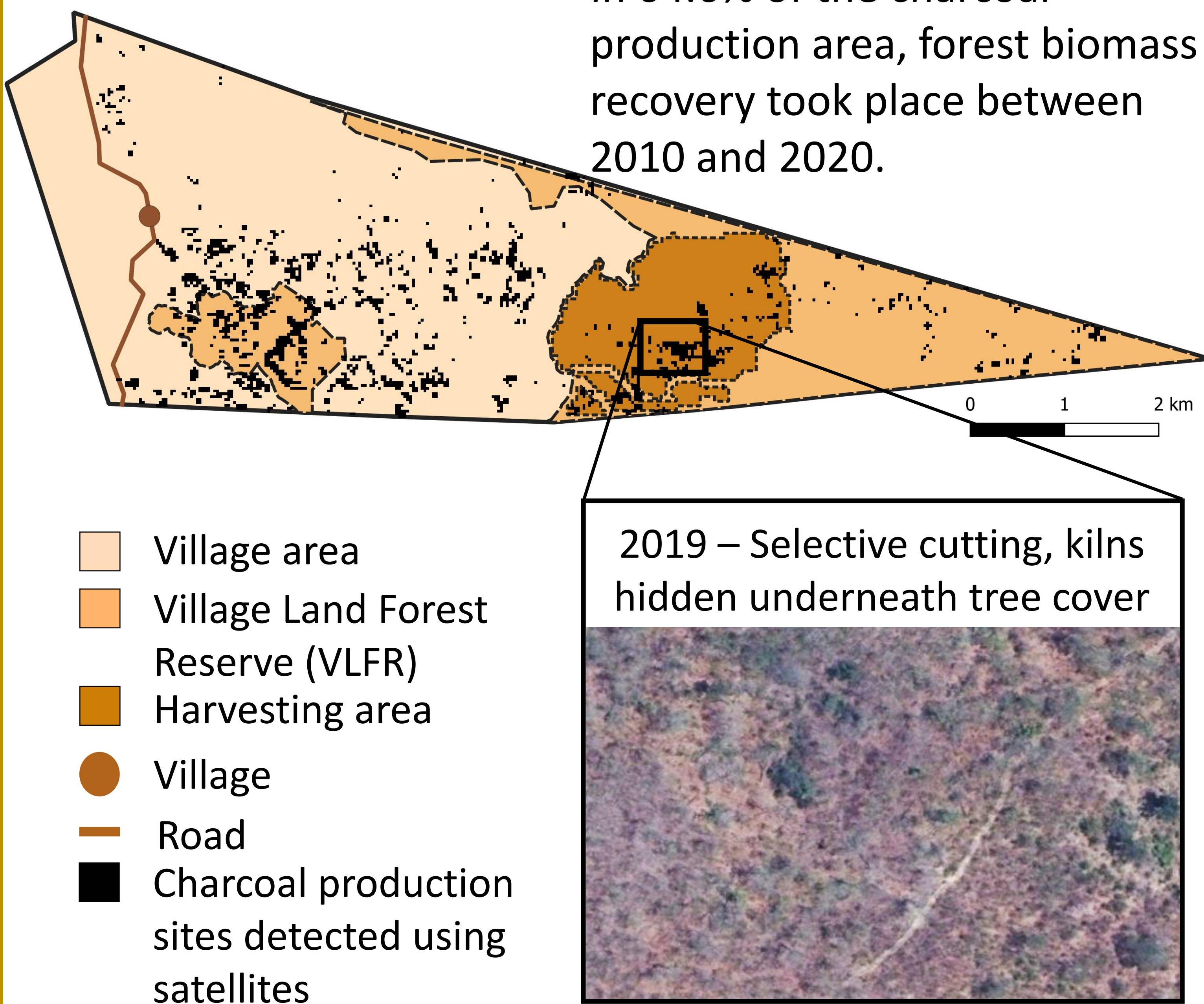
What is the status of charcoal production in Village 1?

Hanneke van 't Veen, Vincent Gerald Vyamana and Moshy Salehe Mpembela

Charcoal production in Village 1 compared to a village without a project

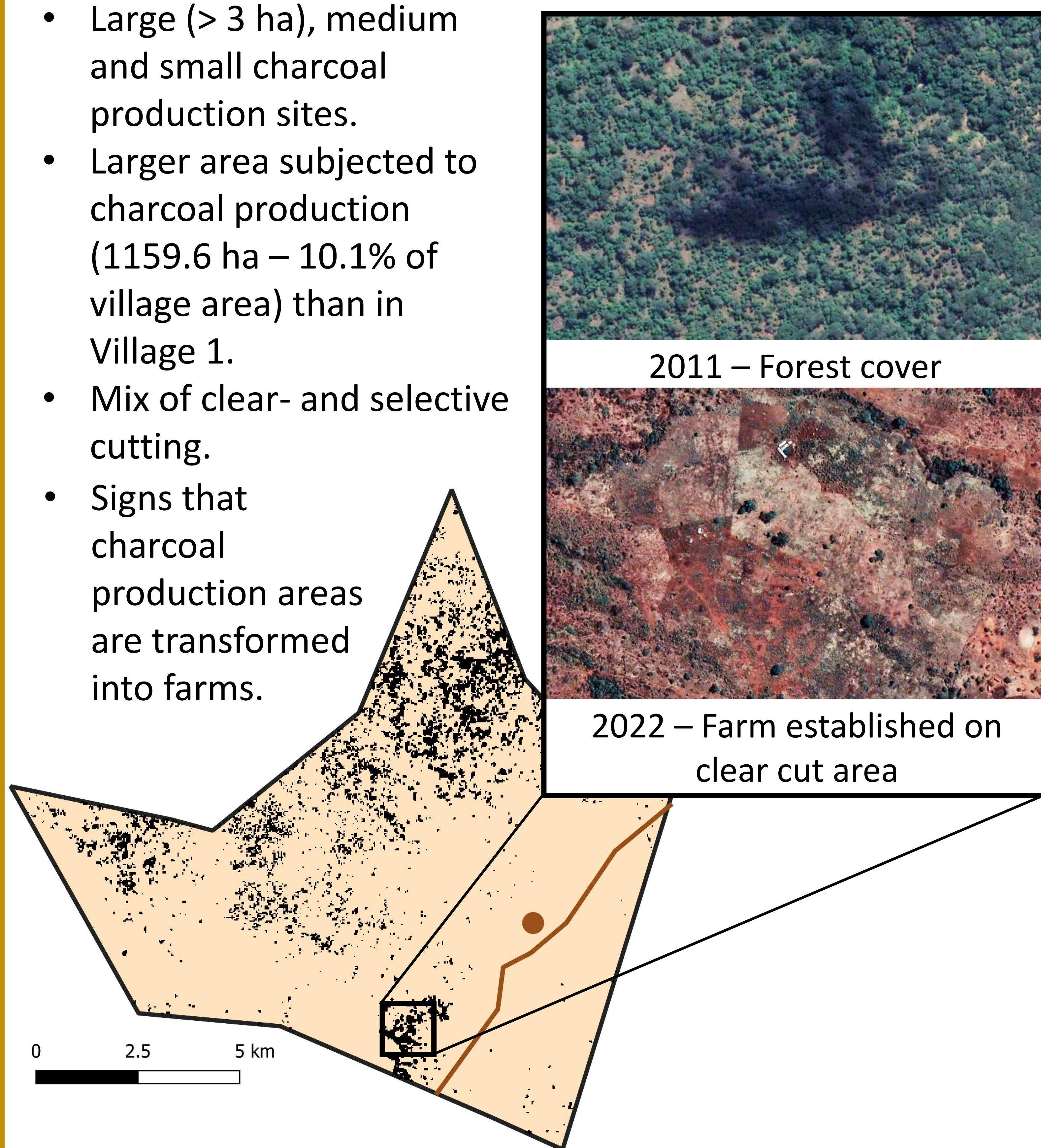
Charcoal production pattern in Village 1

- Small charcoal production sites (mainly <math><1\text{ ha}</math>) are scattered throughout the village.
- Relatively small area subjected to charcoal production (182.6 ha - 6.8% of village area).
- Mostly selective cutting for charcoal production.
 - In 64.6% of the charcoal production area, forest biomass recovery took place between 2010 and 2020.



Charcoal production pattern in village without a project

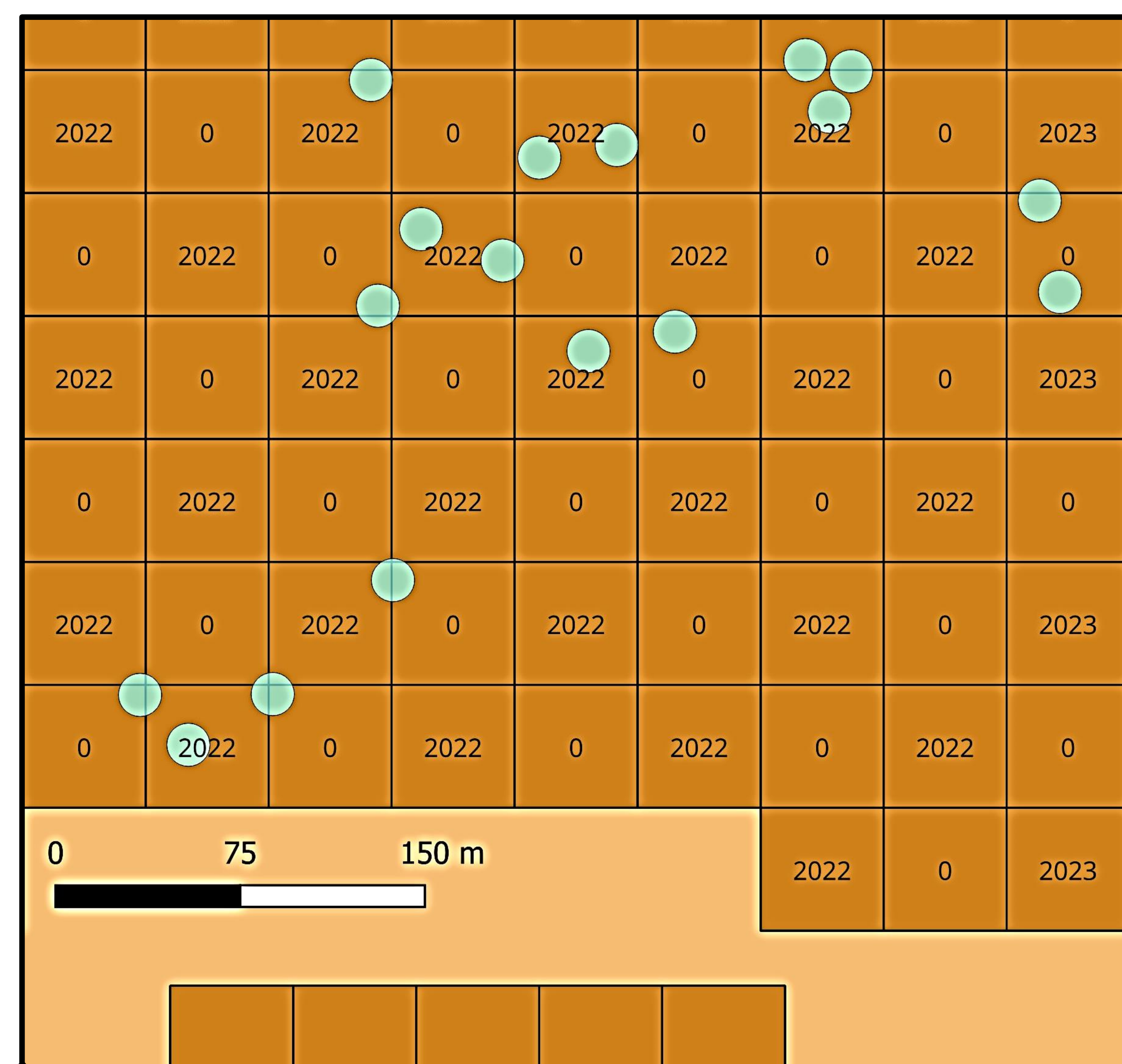
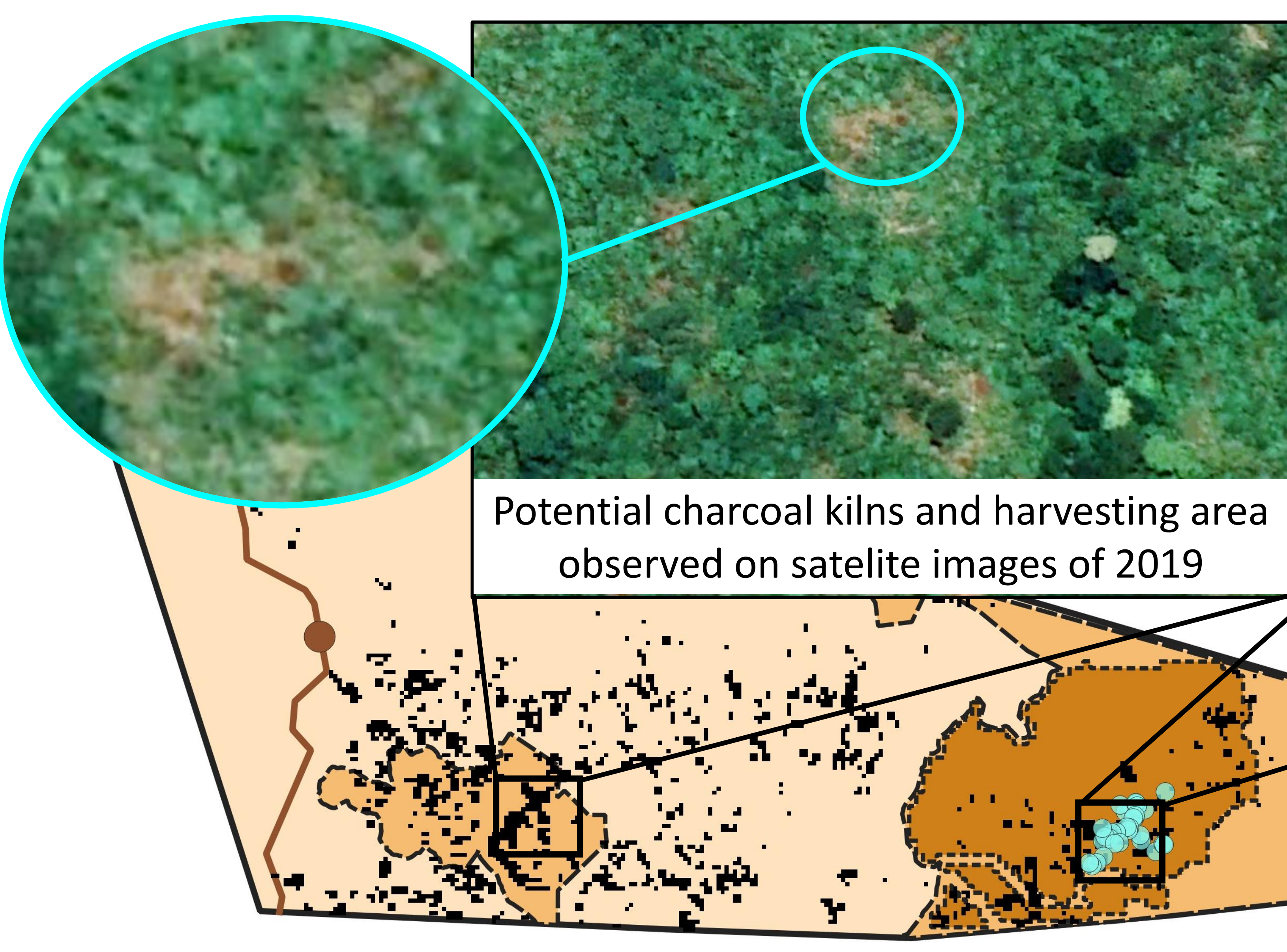
- Large (> 3 ha), medium and small charcoal production sites.
- Larger area subjected to charcoal production (1159.6 ha – 10.1% of village area) than in Village 1.
- Mix of clear- and selective cutting.
- Signs that charcoal production areas are transformed into farms.



Mismatches between the harvesting plan and reality

Mismatch with harvesting plan

- Charcoal production seems to occur outside of the harvesting area (154.4 ha - 84.6% of charcoal production area) – yet, biomass loss only occurred in 36 ha (19.7%) of the total charcoal production area between 2010 and 2020.
- Charcoal is not always produced in plots that are meant to be harvested in a given year.
- Potential signs of charcoal production in unallocated land within the Village Land Forest Reserve.



- Village (brown dot)
- Road (brown line)
- Charcoal kiln (scar) observed in the field in 2019 using GPS (red dots)
- Charcoal production sites detected using satellites (black dots)