

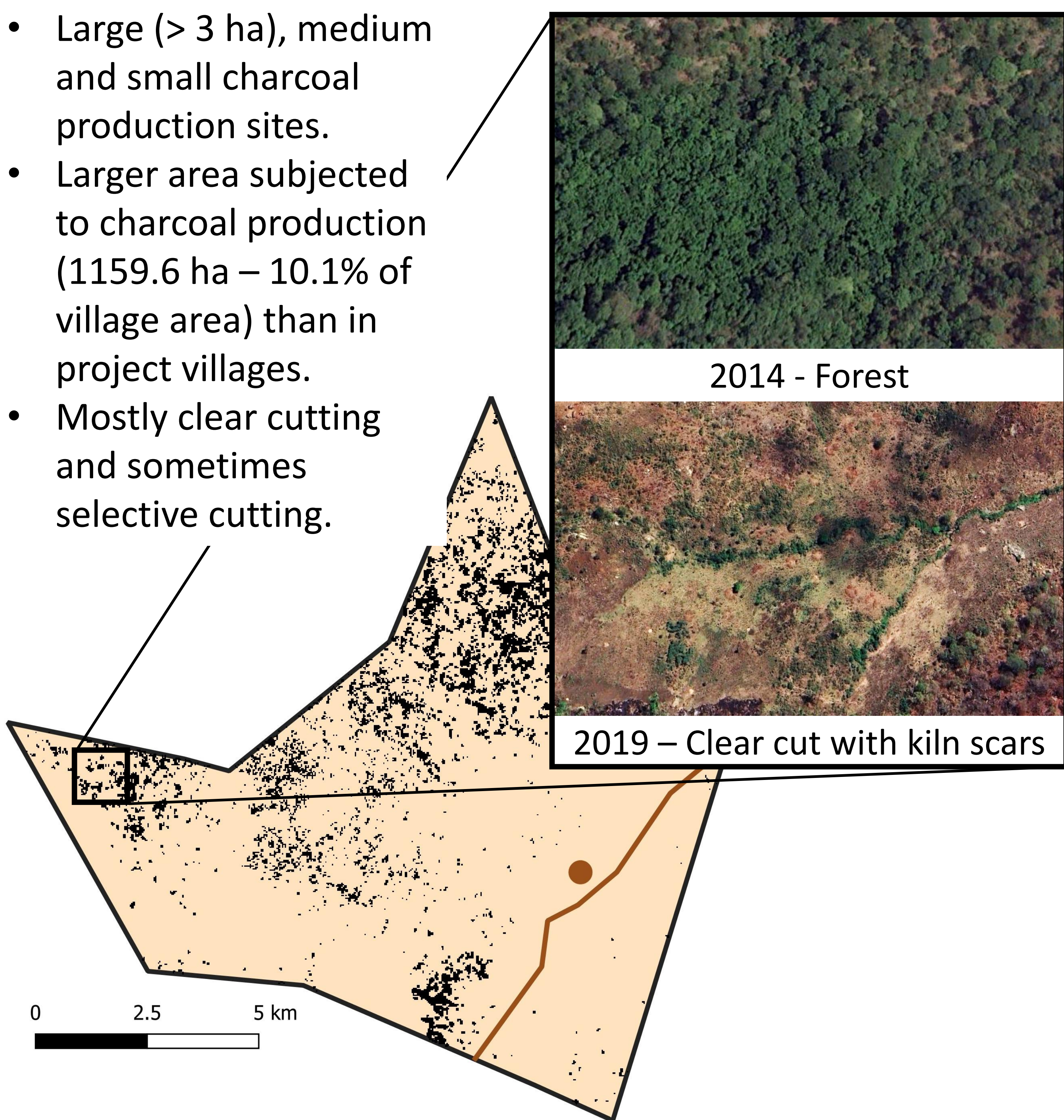
# What is the status of charcoal production in Village 4?

Hanneke van 't Veen, Vincent Gerald Vyamana and Moshy Salehe Mpembela

## Charcoal production in Village 4 compared to a village with a project

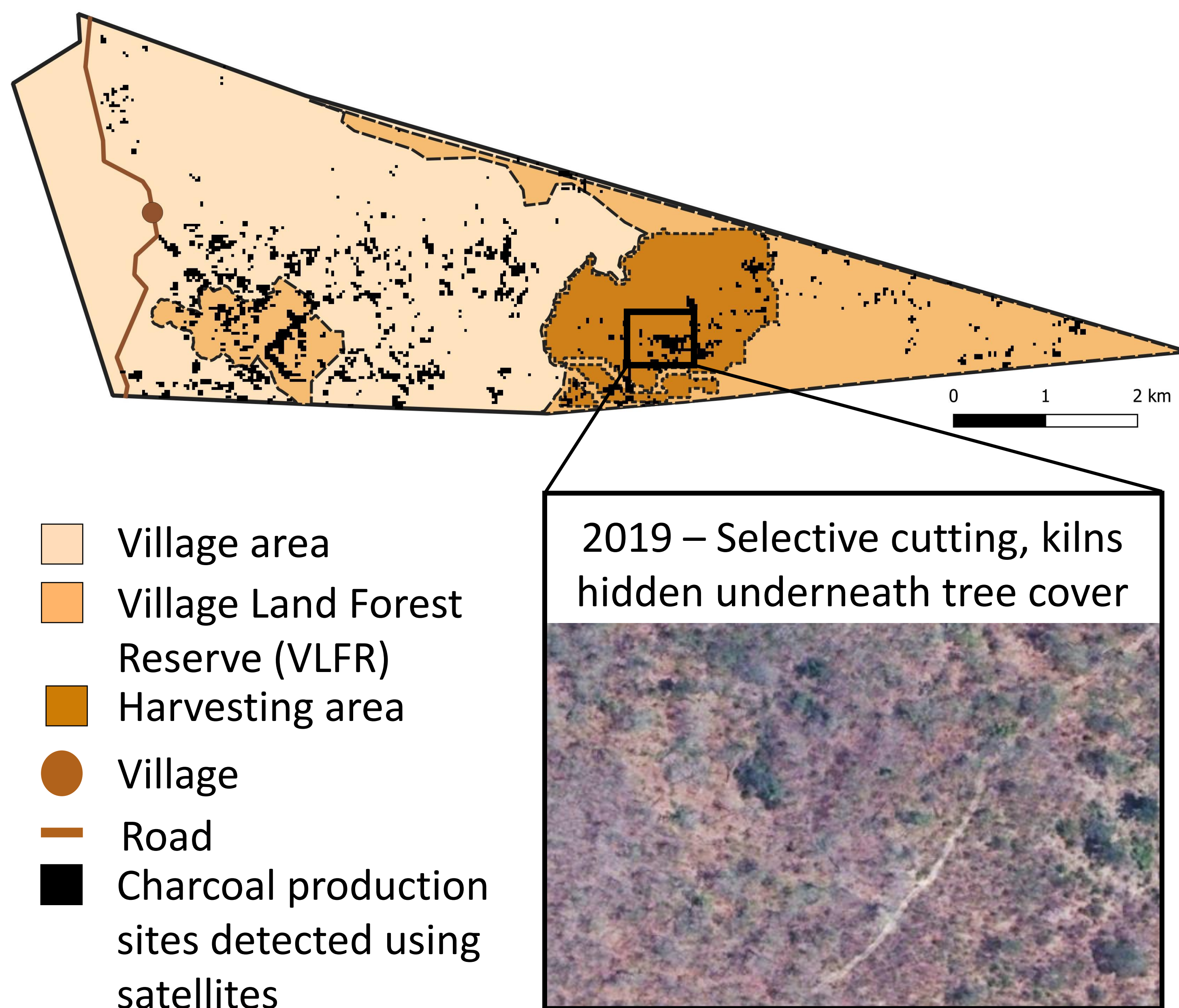
### Charcoal production pattern in Village 4

- Large (> 3 ha), medium and small charcoal production sites.
- Larger area subjected to charcoal production (1159.6 ha – 10.1% of village area) than in project villages.
- Mostly clear cutting and sometimes selective cutting.



### Charcoal production pattern in village with a project

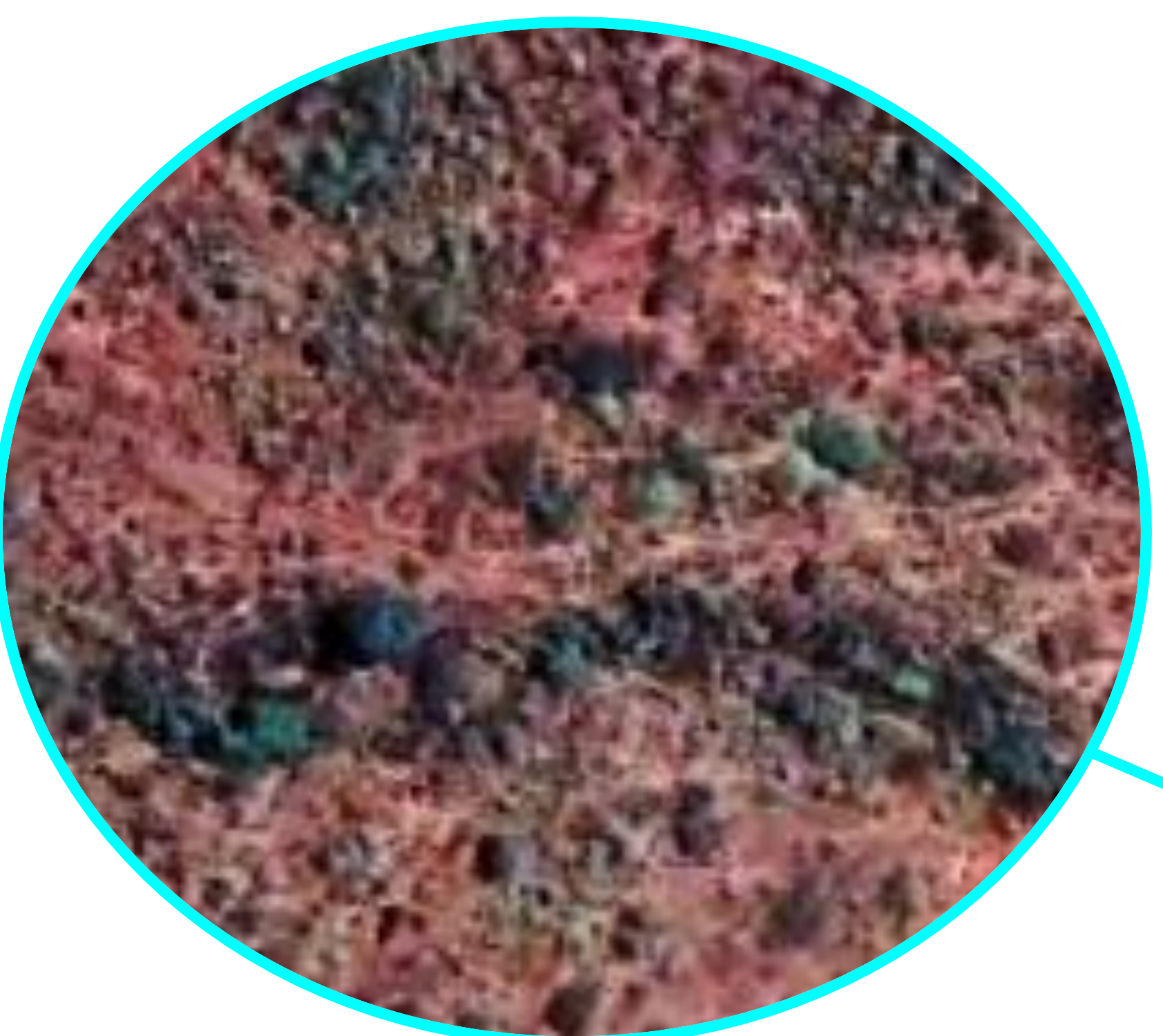
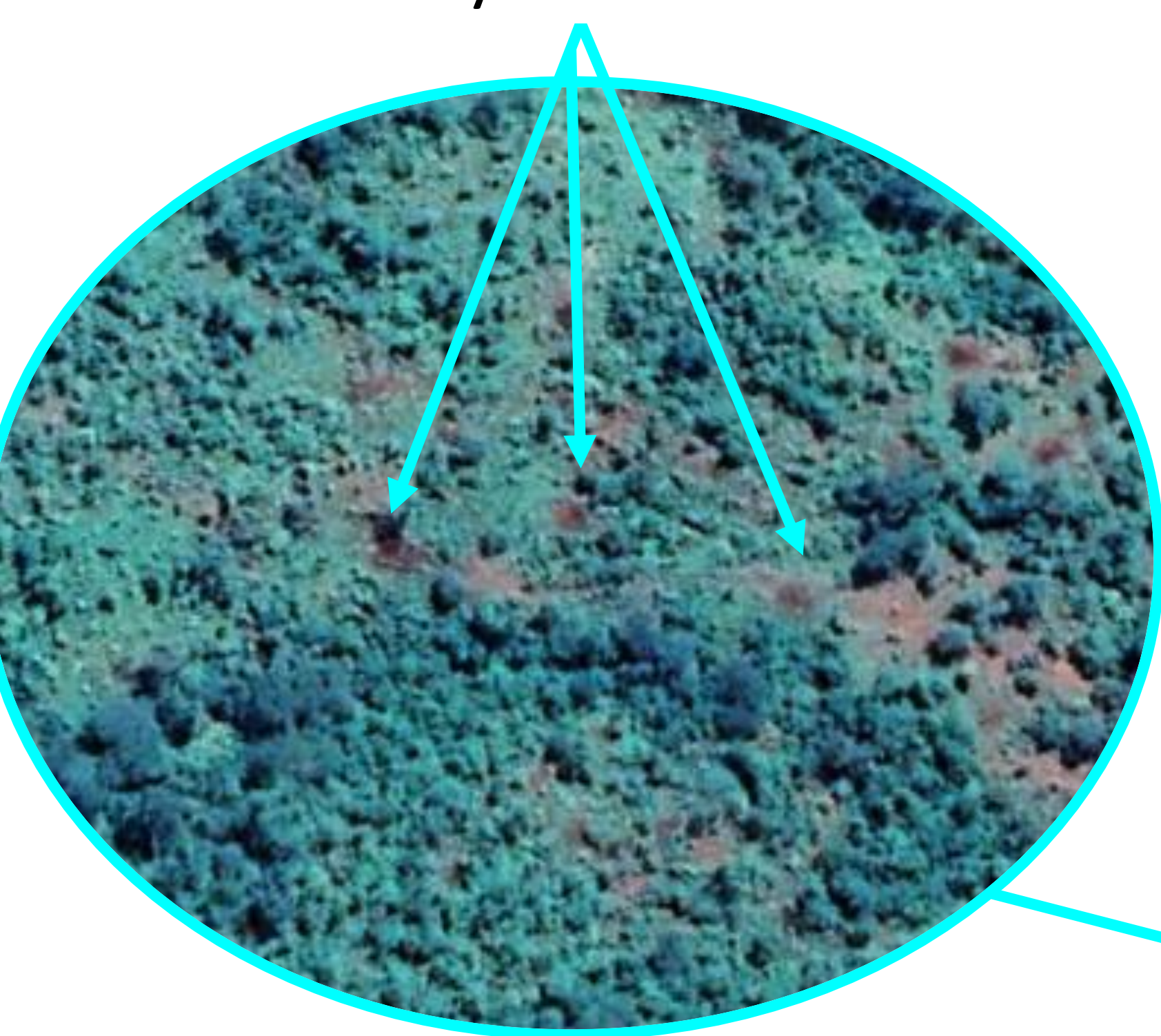
- Small charcoal production sites (mainly <1 ha) are scattered throughout the village.
- Relatively small area subjected to charcoal production (182.6 ha - 6.8% of village area).
- Mostly selective cutting for charcoal production.



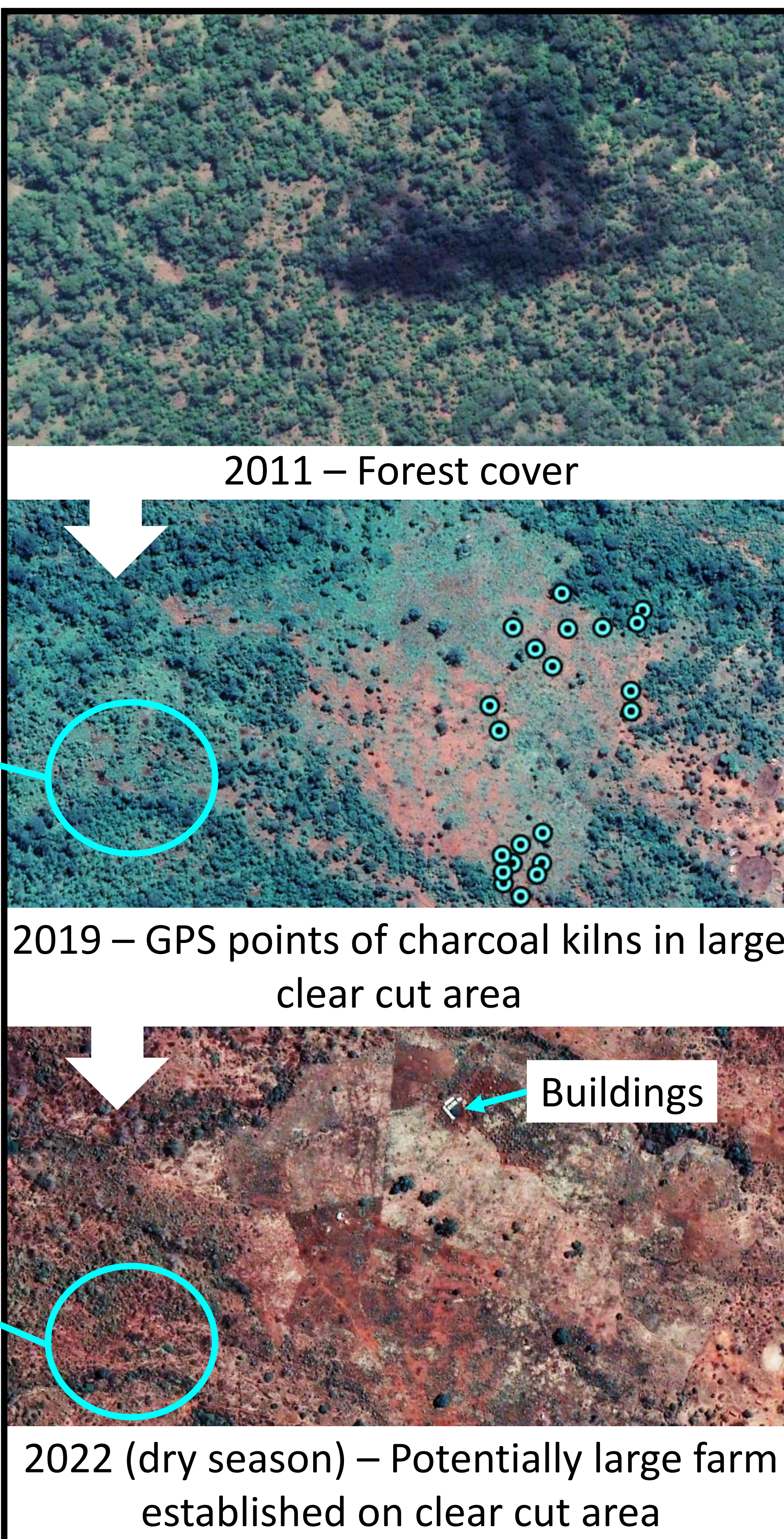
## Timeline of different types of charcoal production in Village 4

### Type 1 – Production followed by forest recovery

Likely to be kilns



### Type 2 – Production to establish farms



- Charcoal production takes place as a stand alone activity and to clear forests to establish farms.
- Biomass loss occurred in 483 ha (41.7%) and biomass gain in 344 ha (29.7%) of the total charcoal production area between 2010 and 2020.

