

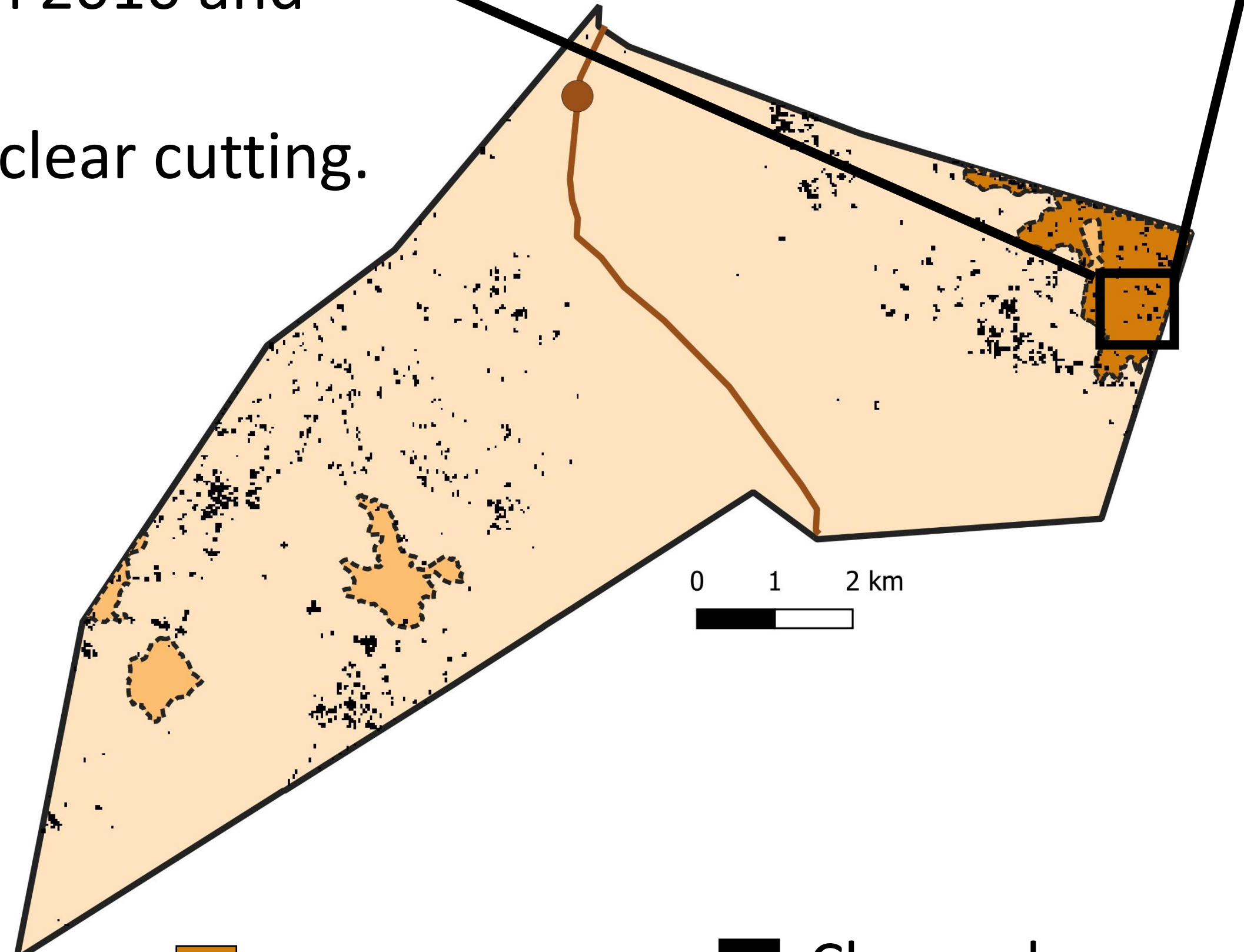
What is the status of charcoal production in Village 3?

Hanneke van 't Veen, Vincent Gerald Vyamana and Moshy Salehe Mpembela

Charcoal production in Village 3 compared to a village without a project

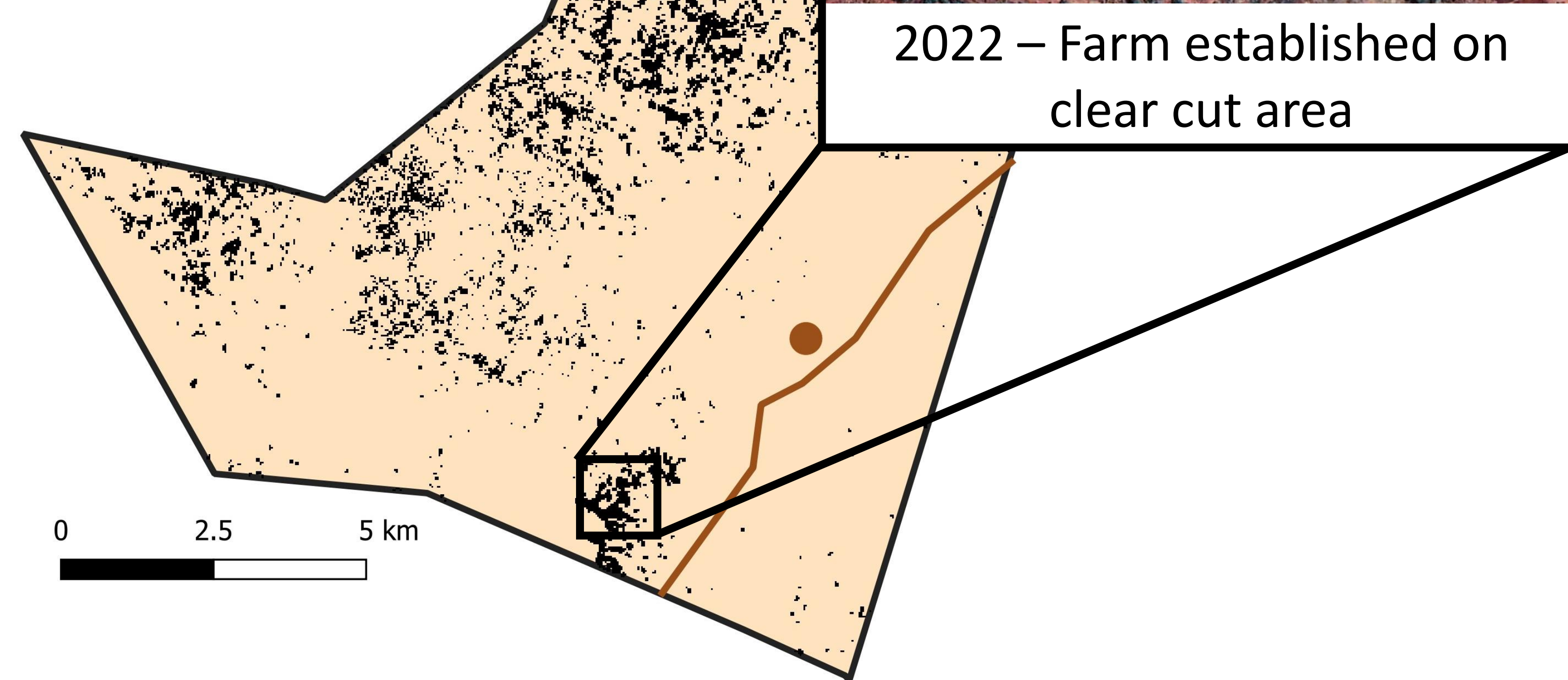
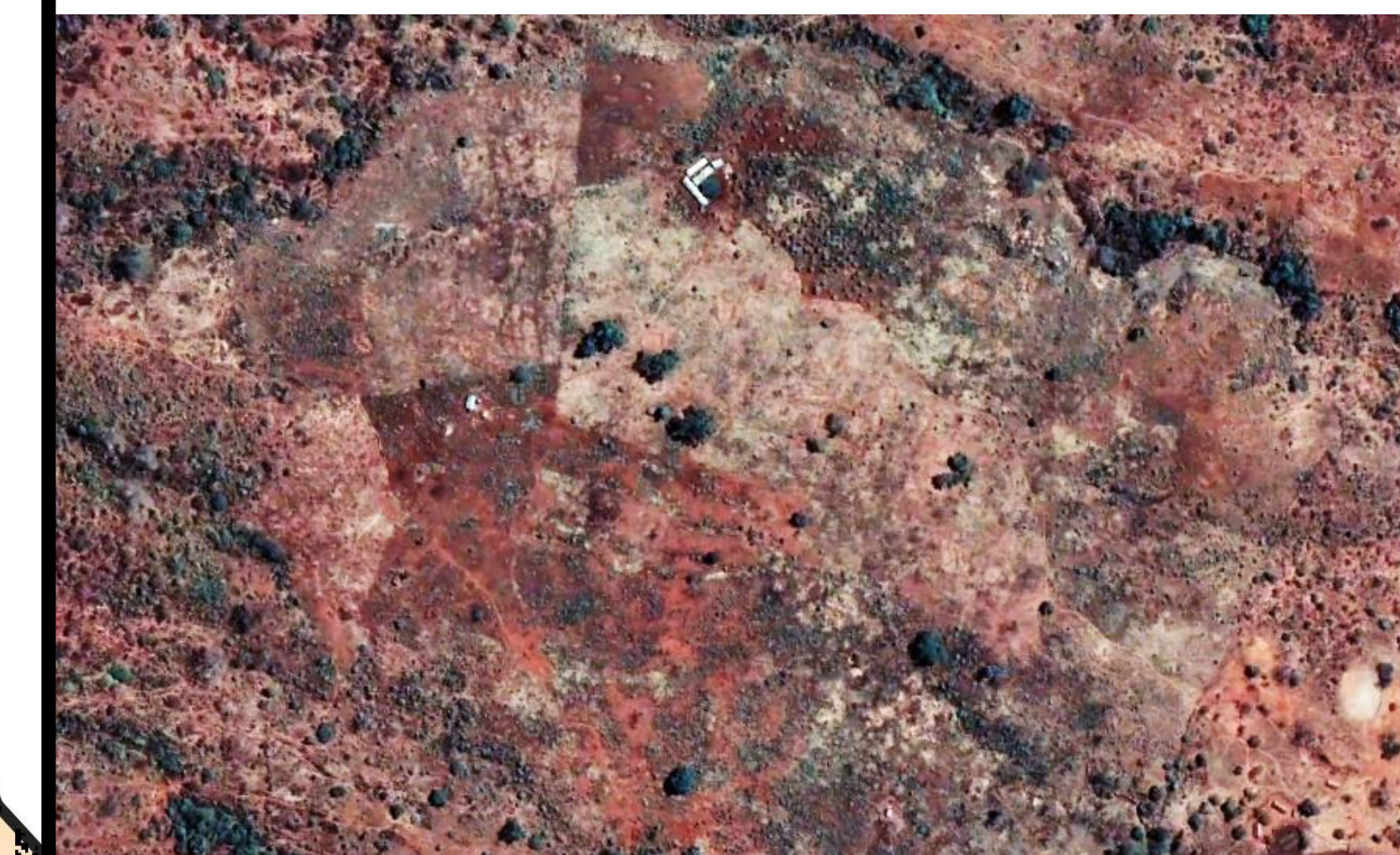
Charcoal production pattern in Village 3

- Small charcoal production sites (mostly < 1 ha).
- Relatively small area subjected to charcoal production (212.6 ha - 2.8% of village area).
- In 55.5% of the charcoal production area, forest biomass recovery took place between 2010 and 2020.
- Selective and clear cutting.



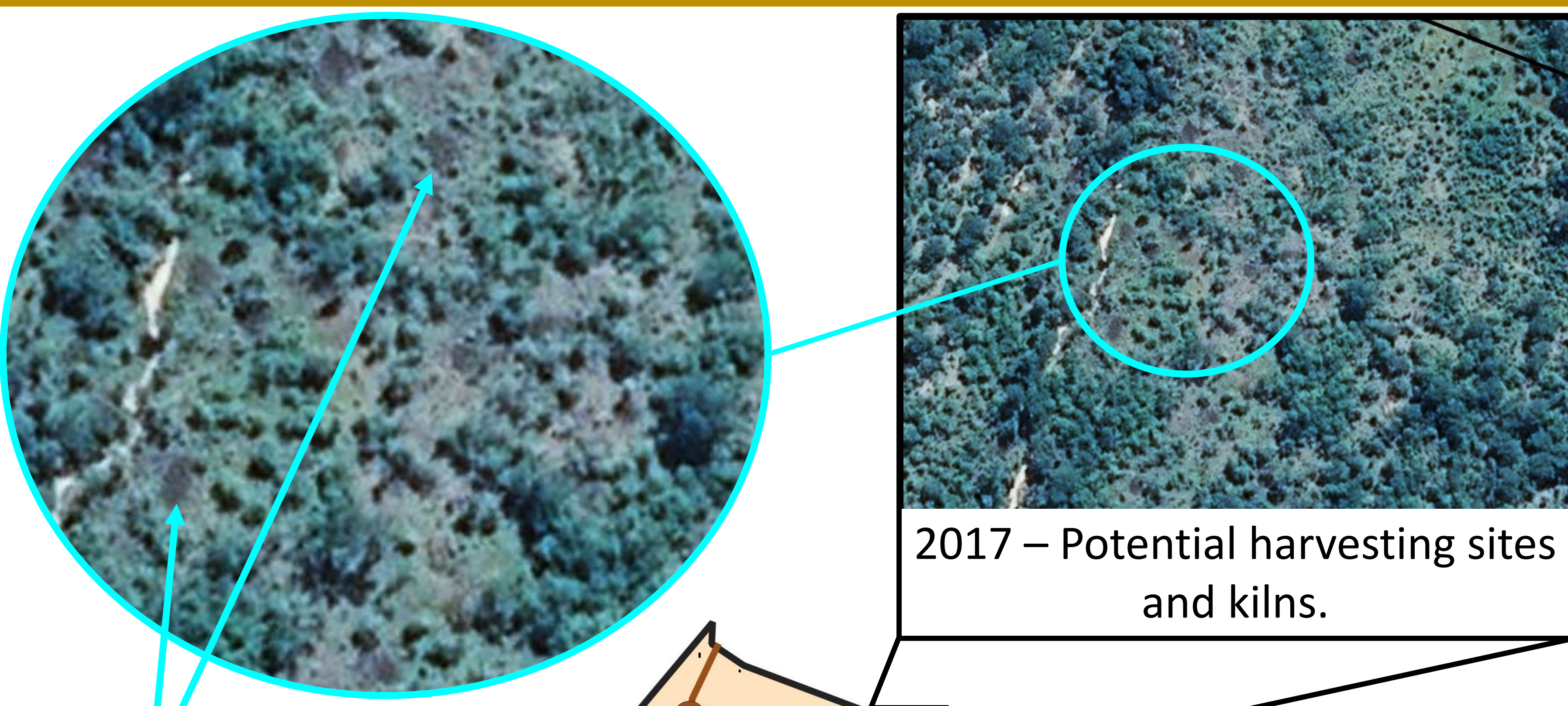
Charcoal production pattern in village without a project

- Large (> 3 ha), medium and small charcoal production sites.
- Larger area subjected to charcoal production (1159.6 ha – 10.1% of village area) than in Village 3.
- Mix of clear- and selective cutting.
- Signs that charcoal production areas are transformed into farms.

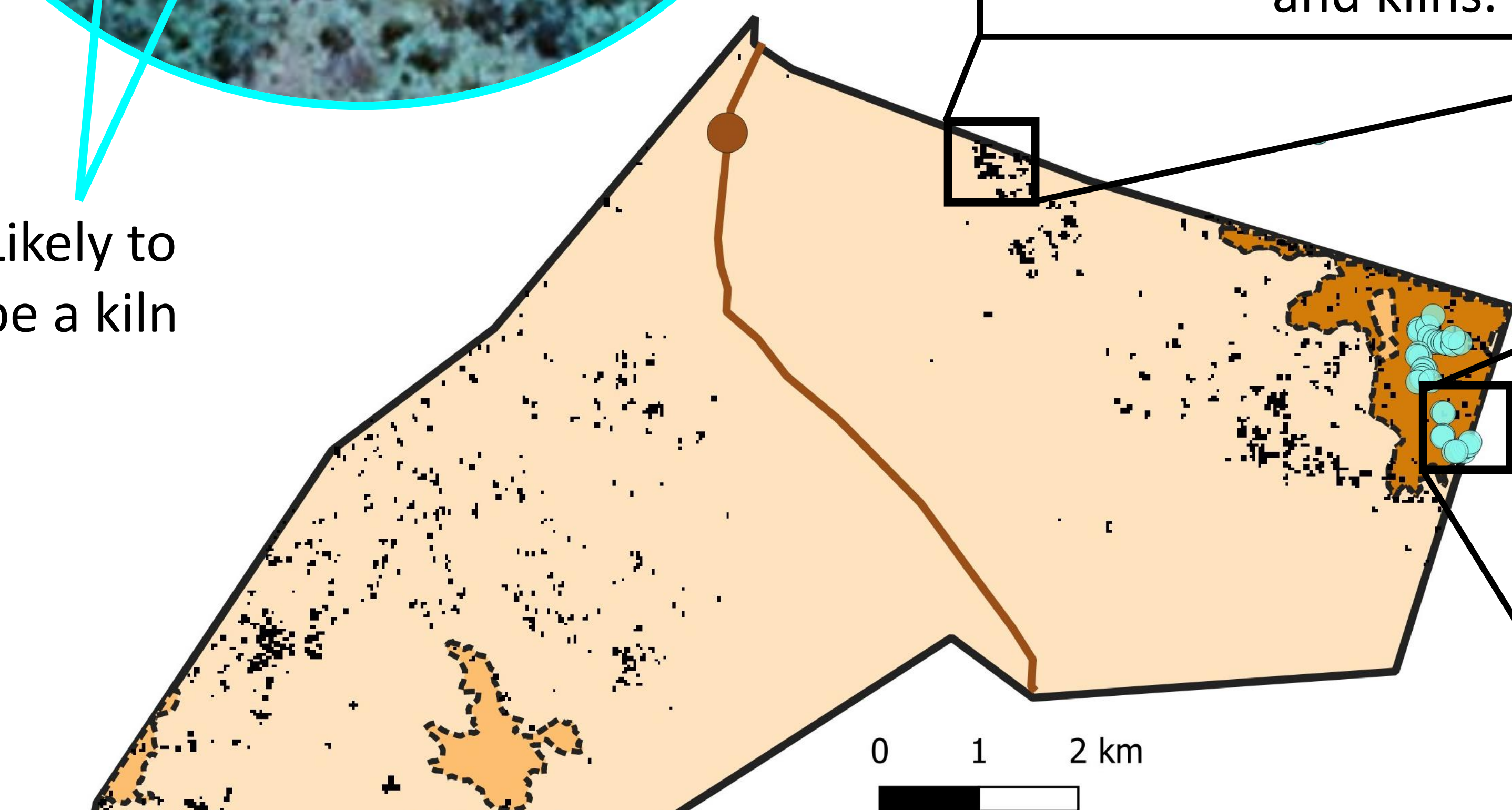


- Village area
- Harvesting area
- Charcoal production sites detected using satellites
- Village Land Forest Reserve (VLFR)
- Village
- Road

Mismatches between the harvesting plan and reality



Likely to be a kiln



- Charcoal kiln (scar) observed in the field in 2019 using GPS
- Village
- Charcoal production sites detected using satellites
- Road

Mismatch with harvesting plan

- Charcoal production seems to occur outside of the designated harvesting area (197.3 ha – 92.5% of charcoal production area) - yet, biomass loss only occurred in 65 ha (30.6 %) of the total charcoal production area between 2010 and 2020.
- Charcoal is not always produced in plots that are meant to be harvested in a given year.
- Signs of clear cutting, instead of selective cutting.
- Signs of charcoal production outside of the village boundary.

